

YACHT-CRANE

YCR-5/10/20/30



• YCR10

YACHT-CRANE 5 / 10 / 20 / 30

Features

- Designed and built with simplicity of use and service in mind
- Lifting and flight adjustment takes place by means of hydraulic cylinders
- Standard radio remote control and standard control panel
- The whole crane can be lowered to the ground with ease for inspection and maintenance or where environmental considerations apply

Advantages

- Tailor made solutions
- No old-fashioned cable winch systems

Benefits

- 30% longer working life compared with a conventional electrically powered static crane
- 70% less maintenance cost

VERMEER MARINE
— LIFT & CARRY —



Aengwinderweg 57 | 8449 BA Terband-Heerenveen | The Netherlands
t +31 513 67 17 68 | f +31 513 67 16 25 | e info@vermeermarine.com | www.vermeermarine.com

YACHT-CRANE

YCR-5/10/20/30

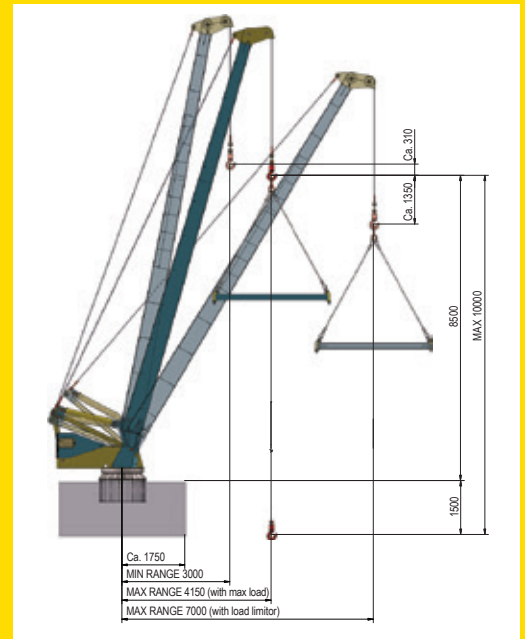


YACHT-CRANE YCR-5/10/20/30

Vermeer Marine offers a range of boat handling equipment such as Yacht-Cranes, transporters and Cradles.

The Yacht-Crane is specially designed to lift or lower pleasure yachts in and out of the water for repair works, winter storage or cleaning. Instead of a hoisting winch, lifting takes place by means of 1 hydraulic cylinder which retract and extract the cable over different sheaves.

This technique has proven it's durability in elevators for many years. It is a very safe and controllable system that will reduce the cost for maintenance significantly. The hydraulic lifting cylinder, cables and sheaves are all built in the crane mast resulting in a smooth looking crane. The Yacht-Crane is electrically / hydraulically driven. The boom can easily be lowered into a horizontal position for maintenance.



Technical information:

Model	YCR-5	YCR-10	YCR-20	YCR-30
Capacity	5 ton/ 25tm	10 ton/ 50tm	20ton/120tm	30ton/210tm
Rotation 360°/ limited	360°/ request	360°/ request	360°/ request	360°/ request
Crane boom length	10.500	12.000 mm	13.500 mm	15.000 mm
Crane boom extension 1.500 mm	n.a.	OPT	OPT	OPT
Lifting height crane hook(s).	8.000 mm	8.000 mm	8.000 mm	8.000 mm
Hydraulic lifting cylinder, to provide crane hook lifting height of 10.000 mm	n.a.	OPT	OPT	OPT
Flight STD	4.150 mm	5.000 mm	6.000 mm	7.000 mm
Flight adjustment backwards	3 - 4,150 mtr	3 - 5 mtr	4 - 6 mtr	5 - 7 mtr
Flight adjustment backwards and forwards including load limiter with optical warning light and acoustic warning	3 - 6 mtr	3 - 7 mtr	4 - 8 mtr	5 - 9 mtr
Lifting speed	1,0 or 3,5 m/min	1,0 or 3,5 m/min	1,0 or 3,5 m/min	1,0 or 3,5 m/min
Hoisting speed without load 8 m/min	OPT	OPT	OPT	OPT
Rotation speed	0,3 rpm	0,3 rpm	0,25 rpm	0,2 rpm
Power E-motor	4 kW	7,5 kW	15 kW	22 kW
Power	400 V, 16A	400 V, 20A	400 V, 40A	400 V, 63A
Control unit	radio remote	radio remote	radio remote	radio remote
Foundation frame with stud bolts	STD	STD	STD	STD
Frames painted	STD	STD	STD	STD

Options

Digital weight gauge in control panel	OPT	OPT	OPT	OPT
Hydraulic cylinder (for yearly maintenance and inspection)	OPT	OPT	OPT	OPT
Spreader bar with quad leg sling and four (4) shackles	OPT	OPT	OPT	OPT
Spreader bar for sailing yachts including mast with quad leg sling and four (4) shackles	n.a.	OPT	OPT	OPT
Four (4) shackles and four (4) hooks to connect slings with spreader bar	OPT	OPT	OPT	OPT
Working lights consisting of two revolving lamps, each 70 Watt (24V)	OPT	OPT	OPT	OPT
Frames galvanized	OPT	OPT	OPT	OPT
Paint on top of galvanized structure	OPT	OPT	OPT	OPT

VERMEER MARINE
— LIFT & CARRY —



Aengwinderweg 57 | 8449 BA Terband-Heerenveen | The Netherlands
t +31 513 67 17 68 | f +31 513 67 16 25 | e info@vermeermarine.com | www.vermeermarine.com